

**INSTRUMENT APPROACH CHART - ICAO PLAN VIEW SCALE: 1:350 000**

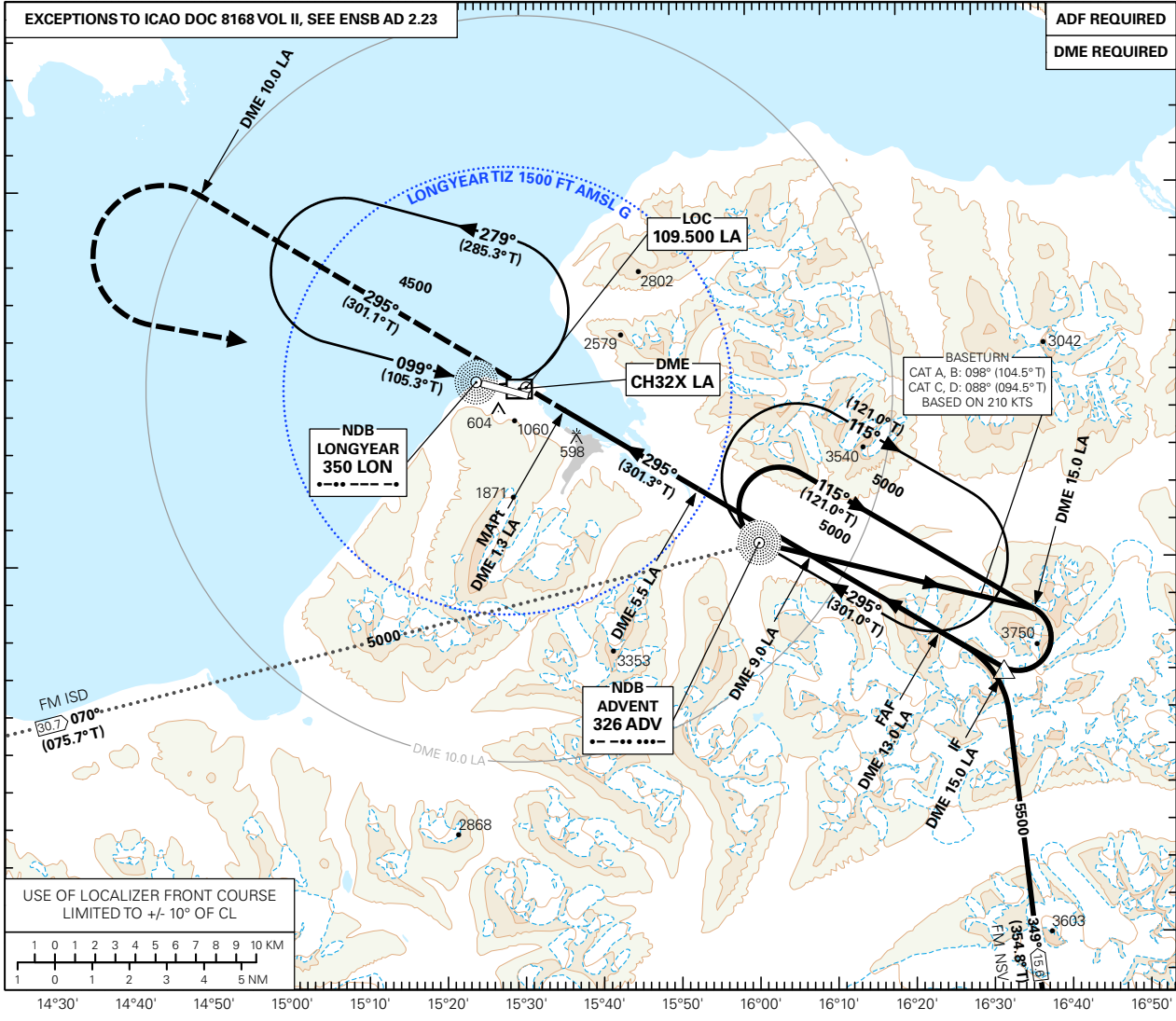
SVALBARD

**LONGYEAR**

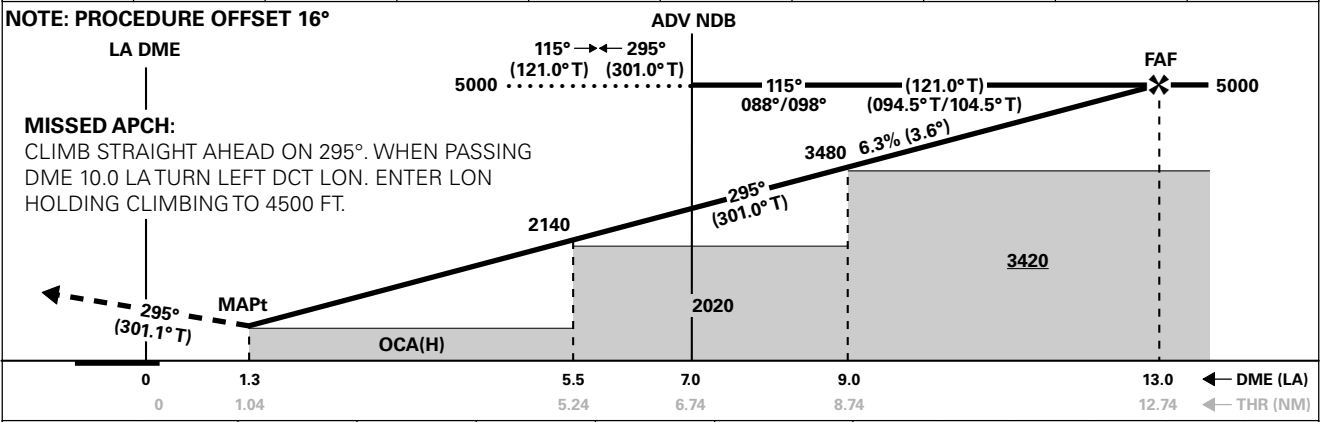
**LOC y RWY 28**

<p>MSA 25 NM LON</p>	AFIS : 118.100	AERODROME ELEVATION: 94 FT	
	119.850	THR ELEVATION: 79 FT	DIST IN NM
VDF: 118.100	HGT RELATED TO THR RWY 28	ELEV, ALT AND HGT IN FT	
		CIRCLING HGT RELATED TO AD ELEV	
		BEARINGS ARE MAGNETIC - VAR 6.2 ° E (2010)	
			TRANSITION ALTITUDE 5000

14°30' 14°40' 14°50' 15°00' 15°10' 15°20' 15°30' 15°40' 15°50' 16°00' 16°10' 16°20' 16°30' 16°40' 16°50'



DIST FM DME	10	9	8	7	6	5	4	3	2
ALT (HGT)	3860 (3781)	3480 (3401)	3090 (3011)	2710 (2631)	2330 (2251)	1950 (1871)	1560 (1481)	1180 (1101)	800 (721)



CAT OF ACFT	A	B	C	D	FINAL APPROACH	DIST FM FAF - MAPt: 11.7 NM					
	2.5%*	1290(1211)				SPEED	KT	70	90	120	150
OCA (H) STRAIGHT - IN	3.0%*	1140(1061)			TIME	MIN:SEC	10:02	07:48	05:51	04:41	03:54
	4.0%*	530(451)			ROD	FT/MIN	445	575	765	955	1150
CIRCLING	1290(1196)	2040(1946)	3560(3466)								

NOTE: \* MNM MISSED APCH CLIMB GRADIENT. CIRCLING N OF AD ONLY.

CHANGES: TRUE TRACKS ADDED.