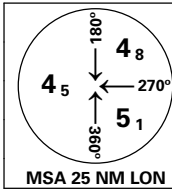


INSTRUMENT APPROACH CHART - ICAO PLAN VIEW SCALE: 1:350 000

SVALBARD

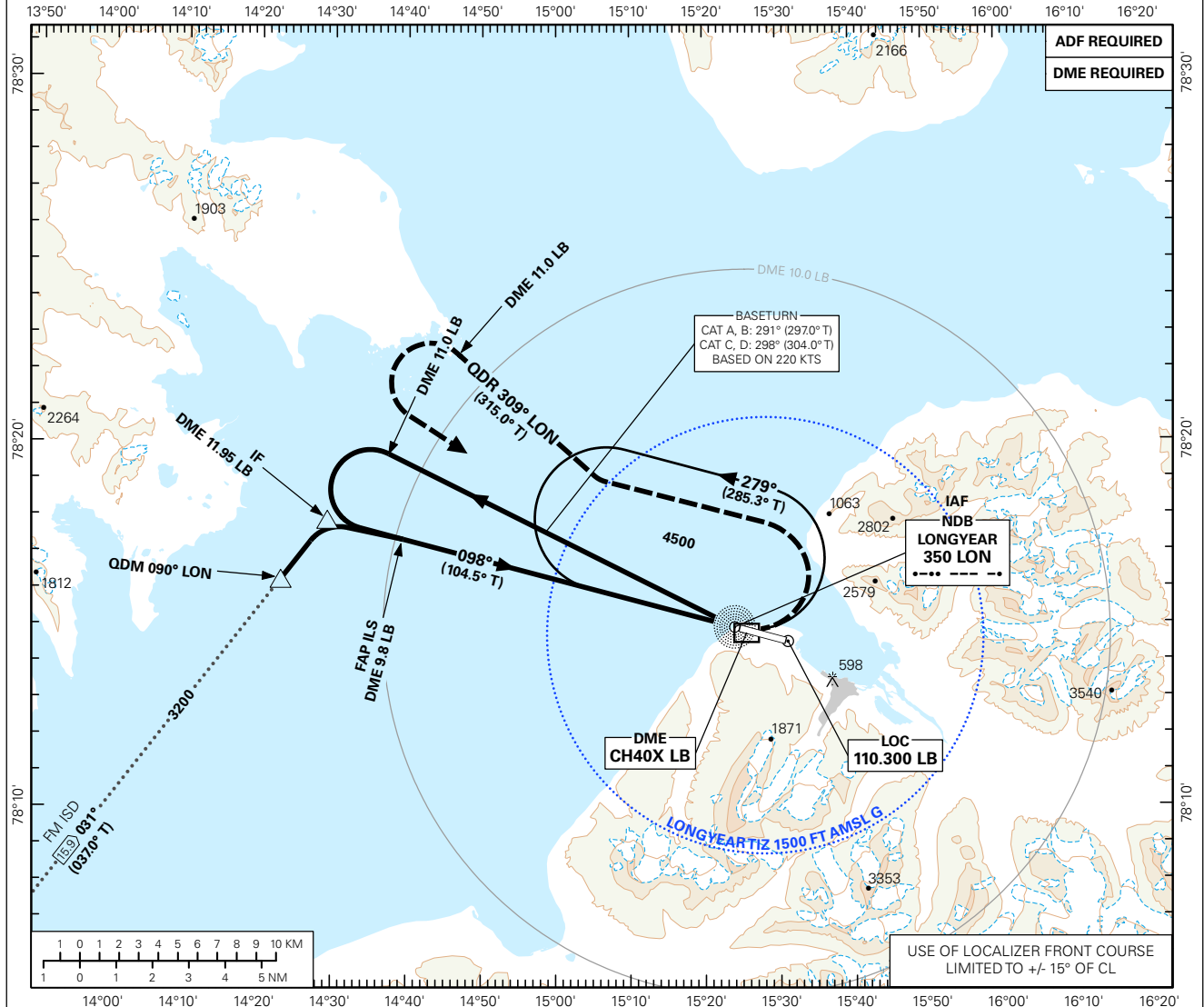
LONGYEAR

ILS RWY 10



AFIS :	118.100	AERODROME ELEVATION: 94 FT	
	119.850	THR ELEVATION: 71 FT	DIST IN NM
VDF:	118.100	HGT RELATED TO THR RWY 10	ELEV, ALT AND HGT IN FT
		CIRCLING HGT RELATED TO AD ELEV	
		BEARINGS ARE MAGNETIC - VAR 6.2 ° E (2010)	

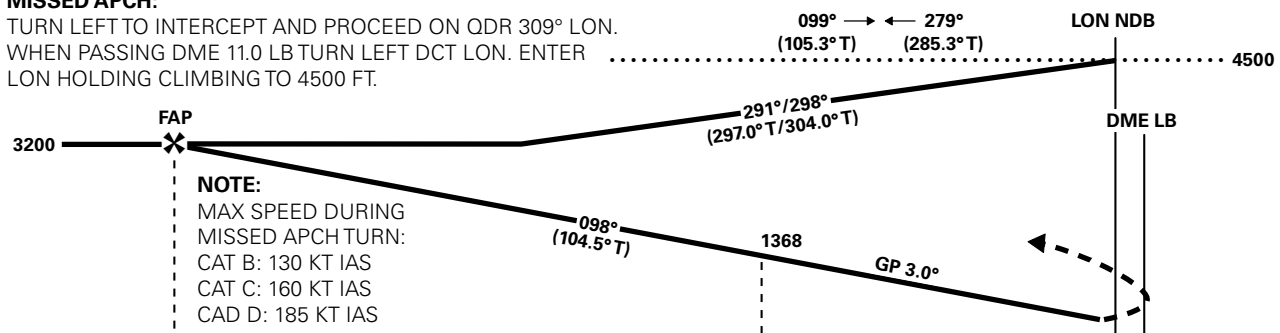
TRANSITION ALTITUDE
5000



DIST FM DME	8	7	6	5	4	3
ALT (HGT)	2683 (2612)	2352 (2281)	2022 (1951)	1694 (1623)	1368 (1297)	1043 (972)

MISSED APCH:

TURN LEFT TO INTERCEPT AND PROCEED ON QDR 309° LON.
WHEN PASSING DME 11.0 LB TURN LEFT DCT LON. ENTER
LON HOLDING CLIMBING TO 4500 FT.



DME (LB)	9.8	4.0	0
THR (NM)	9.68	3.88	0

CAT OF ACFT	A	B	C	D	FINAL APPROACH	DIST FM FAP - THR: 9.68 NM					
	OCA (H)	-	-	-		-	SPEED	KT	70	90	120
STRAIGHT - IN	436(365)	521(450)	631(560)	786(715)	TIME	MIN:SEC	-	-	-	-	-
CIRCLING	930(836)	2040(1946)	3560(3466)		ROD	FT/MIN	370	480	640	795	955

NOTE: CIRCLING N OF AD ONLY.

CHANGES: TRUE TRACKS ADDED.